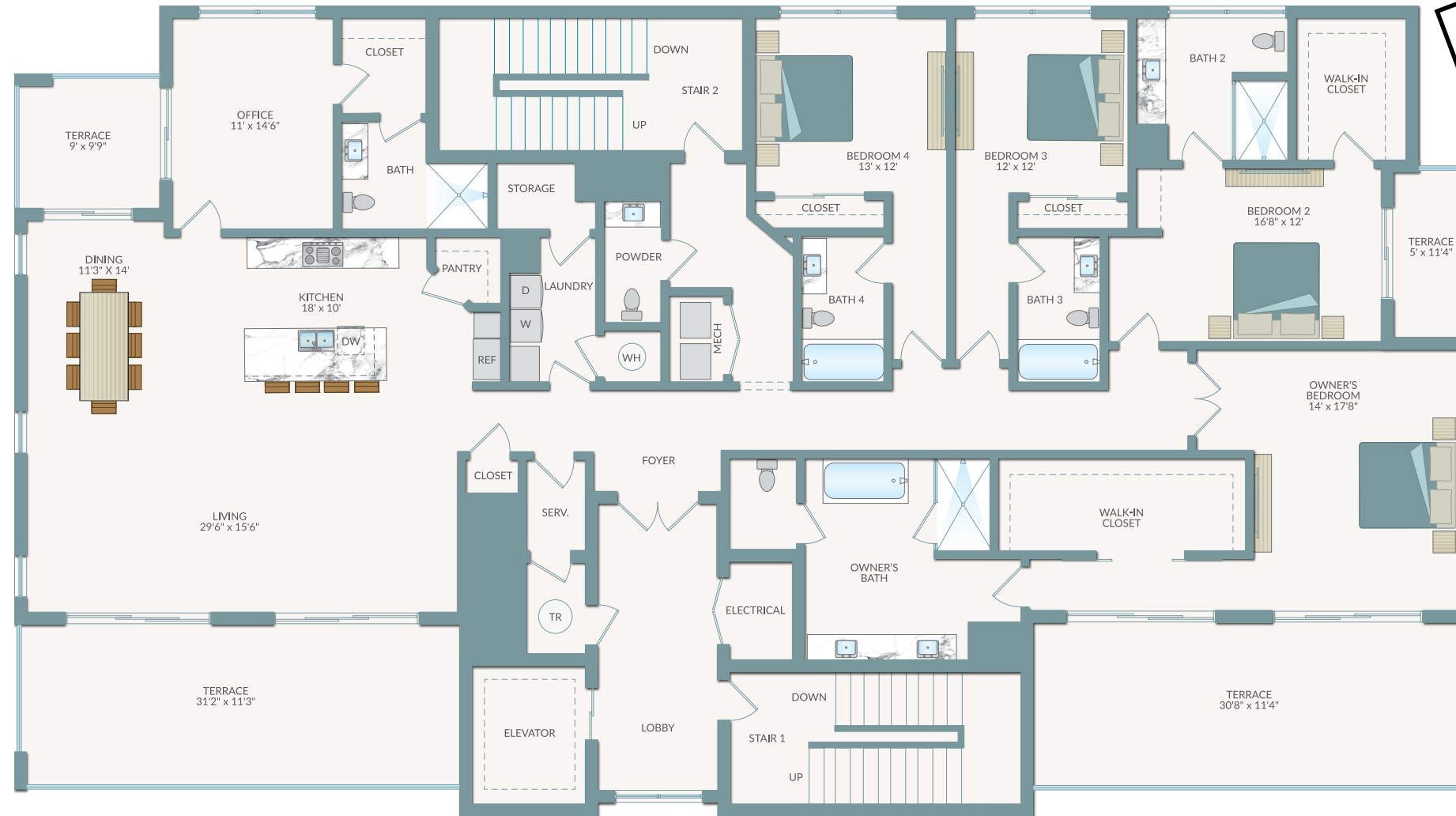


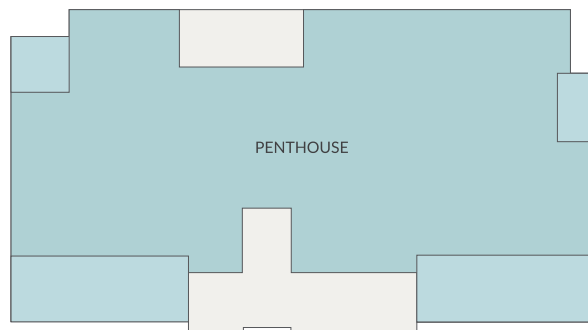
Penthouse

4 Beds, Den, 5.5 Baths

A/C Living Area	3,617 sq.ft.
Terrace	826 sq.ft.
Total	4,443 sq.ft.



S A R A S O T A B A Y



D O W N T O W N M A R I N A

625Sarasota.com

Sales Gallery: 100 N Tamiami Trail, Sarasota, FL 34236
 Community Location: 625 Golden Gate Point, Sarasota, FL 34236



ORAL REPRESENTATIONS CANNOT BE RELIED UPON AS CORRECTLY STATING REPRESENTATIONS OF THE DEVELOPER. FOR CORRECT REPRESENTATIONS, MAKE REFERENCE TO THIS BROCHURE AND TO THE DOCUMENTS REQUIRED BY SECTION 718.503, FLORIDA STATUTES, TO BE FURNISHED BY A DEVELOPER TO A BUYER OR LESSEE. This project has been filed in the State of Florida and no other state. This is not an offer to sell or solicitation of offers to buy the condominium units in states where such offer or solicitation cannot be made. Prices, square footage, and availability are subject to change at any time without notice. This is a limited time offer. Developer may withdraw offering at any time. Coldwell Banker® is a registered licensed trademark. Equal Housing Opportunity